

Work on your test review independently and silently.

Have your HW sheet and your Khan scratch work ready to turn in from last class.

- 1 Morgan won 7 blue ribbons and 4 red ribbons at her horse shows. What is the ratio of red ribbons to blue ribbons she won? *part to part*

(A)  $\frac{4}{11}$

(C)  $\frac{7}{11}$

(B)  $\frac{4}{7}$

(D)  $\frac{7}{4}$

- 2 The table shows the number of wins and losses for four hockey teams.

Hockey Teams' Records

Team	Wins	Losses	
Lightning	14	7	$= 2:1$
Wolves	15	5	$= 3:1$
Thunder	15	3	$= 5:1$
Eagles	12	6	$= 2:1$

Which two teams have the same ratio of wins to losses?

(A)

(B)

(C)

(D) Eagles and Lightning

- 3 Jayson used 1.5 cups of kernels to make 48 cups of popcorn. How many cups of popcorn would he make if he used 0.75 cup of kernels?

(A) 32

(B) 24

(C)

(D)

$$\begin{array}{r} K \ 1.5 \\ \times \ 48 \\ \hline P \ 48 \end{array} \quad \begin{array}{r} 1.5 \\ \times \ 0.75 \\ \hline 24 \end{array}$$

- 4 There are 24 boys and 16 girls on a playground. What is the ratio of boys to total number of children on the playground? *part to whole*

Select all the equivalent ratios that represent this relationship.

(A)  $24:40$

(B)  $24:16$

(C)  $3:2$

(D)  $3:5$

(E)  $6:10$

(F)  $0.4$

$$\begin{array}{r} 24:40 \\ 12:20 \\ 6:10 \\ 3:5 \end{array}$$

- 5 A museum recorded that it had 988 visitors in 4 hours. What is the unit rate in visitors per hour? *How many in ONE hour?*

(A) 222

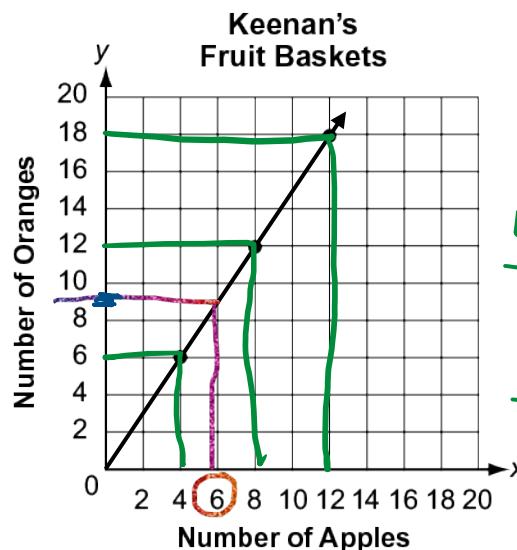
(C) 249

(B) 247

(D) 262

$$\begin{array}{r} 247 \\ 4 \overline{) 988} \\ \underline{-81} \phantom{00} \\ 180 \\ \underline{-168} \phantom{00} \\ 208 \\ \underline{-208} \phantom{00} \\ 0 \end{array}$$

- 6 The graph shows the ratio of apples to oranges in the different fruit baskets that Keenan makes.



If Keenan makes a basket with 6 apples, what is the ratio of apples to oranges written as a fraction?

$$\frac{12 \div 2}{18 \div 2} = \frac{6}{9}$$

$$\frac{4}{6} = \frac{2}{3} \xrightarrow{\times 3} \frac{6}{9}$$

$$\frac{6}{9}$$

Name \_\_\_\_\_

- 7** In four middle schools, the teacher to student ratio is equivalent. Complete the table to show how many teachers and students are at each school.

*22 students per teacher*

**Teachers and Students**

School	Number of Teachers	Number of Students
A	15	330
B	23	506
C	25	550
D	36	792

- 8** Ms. Patel drove 165 miles in 3 hours. If she continues driving at the same speed, how many miles will Ms. Patel drive in 7 hours?

*55 miles in one hour*  
*385 miles in 7 hours.*

- 9** Pablo uses 13.5 cups of flour to make 6 batches of muffins. How many cups of flour did he use per batch?

*2.25 cups per batch*

- 10** Melinda earns \$48 for every 3 lawns she mows in her neighborhood. She wants to buy a skateboard that costs \$208. How many lawns will Melinda have to mow to be able to buy the skateboard?

*Earns \$16 per lawn*

$$\begin{array}{r} 48 \\ 3 \overline{) 48} \\ \underline{30} \phantom{0} \\ 18 \phantom{0} \\ \underline{18} \phantom{0} \\ 0 \end{array}$$

$$\begin{array}{r} 13 \\ 16 \overline{) 208} \\ \underline{16} \phantom{0} \\ 48 \phantom{0} \\ \underline{48} \phantom{0} \\ 0 \end{array}$$

- 11** Kiaya recorded the distance she rode her bike during four different workouts. She rode the same number of kilometers per hour during each workout.

**Part A**

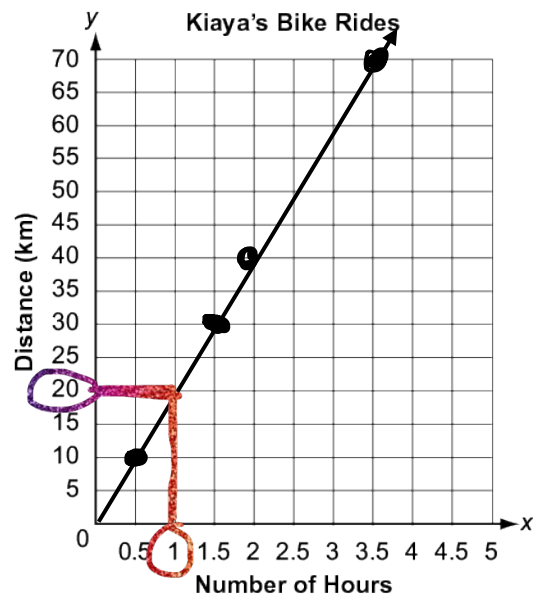
Complete the table to show how many hours or kilometers she rode.

**Kiaya's Bike Rides**

Number of Hours	.5	1.5	2	3.5
Distance (km)	10	30	40	70

**Part B**

Graph the 4 points from the table to show the distance Kiaya rode based on the number of hours she rode.



**Part C**

How many kilometers did Kiaya ride per hour?

*20 km per hour*

*Melinda needs to mow 13 lawns.*